

REAL-EL
OPERATION MANUAL



**OIL-FILLED PORTABLE
RADIATOR HEATER**

HEAT-L210

Congratulations on your purchase of the REAL-EL Oil-filled portable radiator heater!

COPYRIGHT

© 2022. ENEL GROUP OU.

This Manual and information contained in are copyrighted. All rights reserved.

TRADEMARKS

All trademarks are the property of their legal holders.

CONTENTS

1. BUYER RECOMMENDATIONS	1
2. PACKAGE CONTENTS	1
3. SAFETY PRECAUTIONS	2
4. PARTS DESCRIPTION.....	3
5. ASSEMBLE	3
6. PREPARING FOR OPERATION	3
7. OPERATION	3
8. CLEANING	4
9. OPERATION	4
10. SPECIFICATION	4

1. BUYER RECOMMENDATIONS

- Unpack the device carefully. Make sure there are no accessories left in the box. Check up the device for damage; if the product was damaged during transportation, address the firm, which carried out the delivery; if the product functions incorrectly, address the dealer at once.
- Check up the package contents and availability of the warranty card.
- Do not switch on the speaker system immediately after you bring it into a room from environment with negative temperature! After unpacking, the speaker system should be kept in conditions of room temperature for at least 4 hours.
- Before installing and using the speaker system, read this Manual carefully and keep it for future reference.

2. PACKAGE CONTENTS

- Oil-filled portable radiator heater — 1 pc
- Humidifier — 1 pc
- Wheelbase support — 2 pc
- Bracket — 2 pc
- Roller wheels — 4 pc
- Wing nuts — 4 pc
- Nut — 4 pc
- User manual — 1 pc
- Warranty card — 1 pc

Special features

- Energy-efficient
- Humidifier included
- Adjustable thermostat
- Overheating Protection
- Green environmental conducting oil
- Power indicator light
- Maintenance Free
- Silent Heating
- Castors for easy mobility

3. SAFETY PRECAUTIONS

1. Read the instructions carefully before use and save them for future reference.
2. Always disconnect the heater from the main supply when not in use and when cleaning.
3. Do not leave the heater switched ON unattended.
4. Never cover the heater as this may lead to risk of fire.
5. Keep the heater a distance of at least 90cm from any combustible material, such as furniture, curtains, bedding clothes or papers.
6. Keep the heater clean. Do not allow objects to enter the ventilation, as this may cause electric shock, fire or damage the heater.
7. Close supervision is required when any appliance is used near or by children.
8. Never allow the cord to touch wet or hot surfaces, become twisted or be within the reach of children.
9. Do not use outdoors.
10. Do not place on or near a hot gas or electric burner.
11. Never use the appliance with a damaged cord or plug or after the appliance has malfunctioned or been damaged in any way.
12. Never attempt to open any part or dismantle the controls. Responsibility for failure cannot be accepted if these instructions have been ignored.
13. Do not use the appliance for anything other than its intended use.
14. This appliance is intended for household use only.
15. Regulations concerning the disposal of the oil when scrapping the appliance have to be followed.
16. Any repairs that need to be done to the heater must be referred to an authorized service agent only.
17. The appliance is not intended for use by children or infirm persons without supervision.
18. Children should be supervised to ensure that they do not play with the appliance.
19. If the supply cord is damaged, it must be replaced by the manufacturer or its service agent in order to avoid a hazard.
20. The heater must not be located immediately below a socket-outlet.
21. Do not use this heater in the immediate surroundings of a bath, a shower or a swimming pool.
22. This heater is filled with a precise quantity of special oil. Repairs requiring opening of the oil container are only to be made by the manufacturer or his service agent who should be contacted if there is an oil leakage. Regulations concerning the disposal of the oil when scrapping the appliance has to be followed.
23. This appliance is not intended for use by persons (including children) with reduced physical, sensory or mental capabilities, or lack of experience and knowledge, unless they have been given supervision or instruction concerning use of the appliance by a person responsible for their safety.
24. Children should be supervised to ensure that they do not play with the appliance.

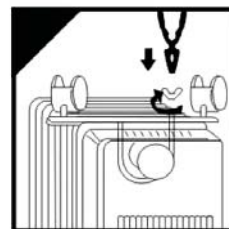
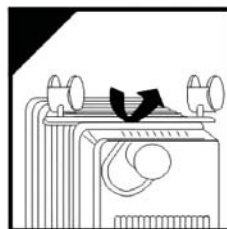
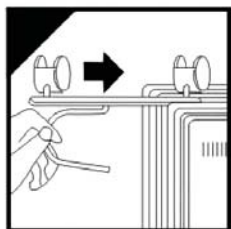
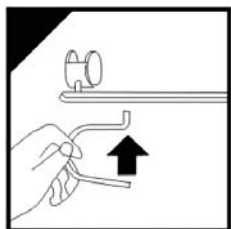
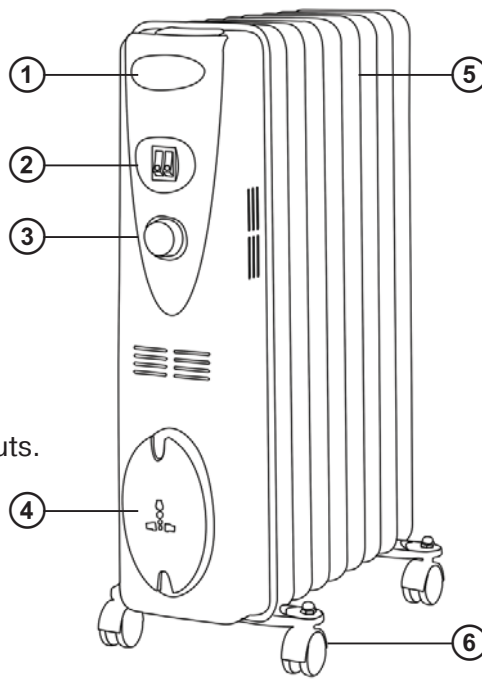
4. PARTS DESCRIPTION

- ① Handle
- ② Power setting switch
- ③ Thermostat control
- ④ Cord storage
- ⑤ Oil filled fins
- ⑥ Castors

5. ASSEMBLE

- Remove the heater and all the accessories from the carton.
- Turn the heater upside down.
- Insert the castors into the support base holes and tighten by nuts.
- Position the wheel base assemblies between the end fins.
- Attach them to the heater using the U-bolts and wing nuts supplied.
- Tighten the wing nuts.
- Turn the heater the right way up.
- If necessary, attach a humidifier between the heater fins and fill it with water.

Warning: DO NOT TURN RADIATORS UPSIDE-DOWN DURING OPERATION.



6. PREPARING FOR OPERATION

- Place the heater on the floor at least 90cm away from the wall and any other objects such as furniture, Curtains or plants.
- Make sure the power supply used corresponds to the one on the rating label.
- Make sure thermostat control switch in the “O” position and the power setting switches in the “OFF” Position. Plug the heater into the main power supply.

7. OPERATION

Room temperature can be adjusted using the thermostat. Turn the thermostat knob clockwise, to increase the heat, and anti-clockwise to decrease the temperature, until you reach the desired temperature.

- Switch the heater to one of the following power settings.
- Push switch (I) for 800W
- Push switch (II) for 1200W
- Push switches (I and II) for 2000W

The power switch lights up when activated.

Turning the thermostat control clockwise will increase the “set” temperature.

Turning the thermostat anti-clockwise will decrease the “set” temperature.

Once you have finished using your heater, turn the power switches off, and the thermostat control switch to the “0” positions, then unplug from the mains supply.

Warning:

Do not cover the heater at any time during operation.

There is a risk of fire if the heater is covered.

8. CLEANING

- Always disconnect the heater from the mains supply before cleaning.
- Clean the outside of the heater by wiping with a damp cloth and buff with a dry cloth.
- DO NOT use waxes or polishes as these may react with the heater and cause discoloration.

9. STORING

- Clean the heater
- Cover it to protect from dust
- Store in a cool and dry place.

10. SPECIFICATION

Parameter	Value
Heater type	oil
Control	manual
Fins quantity	9
Fin Size	150 x 580 mm
Power level selection	800/1200/2000 W
Maximum power	2000 W
Power supply	230/50 V/Hz
Product dimensions	42 x 24 x 65 mm
Weight	10.3 kg

Notes:

- *Technical specifications given in this table are supplemental information and cannot give occasion to claims.*
- *Technical specifications and package contents are subject to change without notice due to the improvement of REAL-EL production.*



Manufacturer: ENEL GROUP OU, Harju maakond, Rae vald, Jüri alevik, Aruküla tee 55a, 75301, Estonia.
® Registered Trademark of ENEL GROUP OU. Estonia.